

SPECIFICATIONS (See notes 1 and 2)

Specifications (See notes 1 and 2)

Loudspeaker Type: 2-way, full-range
Operating Range: 50 Hz - 16 kHz
Max Input Ratings: 150W Continuous, 400W Program
 35 volts RMS, 80 volts momentary peak
Recommended Power Amplifier:
 330W to 480W @ 8 Ohms

Sensitivity 1W/1m:
 97 dB SPL (100 Hz - 12.5 kHz 1/3 octave bands)
 98 dB SPL (250 Hz - 4 kHz speech range)

Maximum Output: 119 dB SPL / 126 dB SPL (peak)

Nominal Impedance: 8 Ohms

Min Impedance: 6.8 Ohms @ 60 Hz

Nominal -6dB Beamwidth:
 90° H (+14° / -41°, 2 kHz - 12.5 kHz)
 40° V (+12° / -14°, 2 kHz - 12.5 kHz)

Axial Q / DI: 21.6 / 13.3, 1 kHz - 12.5 kHz

Crossover Frequency: 2 kHz

Recommended Signal Processing:
 60 Hz high pass filter

Drivers:
 LF (1) 12"
 HF (2) 1" exit

Driver Protection: PowerSense Plus™

Input Connection:
 (1) Locking Connector
 (2) 1/4" jacks

Controls: none

Enclosure: Black carpeted, 18mm particle board

Enclosure Hardware: (3) Rubber feet
 (4) Corner protectors

Mounting / Rigging Provisions:(3) 5/16-18 hanging points

Grille: 18 gauge perforated steel

Required Accessories: None

Supplied Accessories: None

Optional Accessories:
 Strapkit: (3) Steel Straps for Suspending

Dimensions:
Height: 22.4 in. / 569.4 mm
Width: 13.9 in. / 353.5 mm
Depth: 14.1 in. / 358 mm
Weight: 29 lb. / 13 kg
Shipping Weight: 36 lb. / 16.3 kg

1. Sensitivity: Free field pink noise measurement at 40 ft / 12.2 m at 60% power; extrapolated to 1 meter and an input of 2.83 volts RMS.

2. Watts: All wattage figures are calculated using the rated nominal impedance.

APPLICATIONS:

- Sound Reinforcement / Portable PA
- Clubs / DJ
- Sport Facilities & Health Clubs
- Keyboard Systems
- Rental Systems
- Monitor Systems

FEATURES:

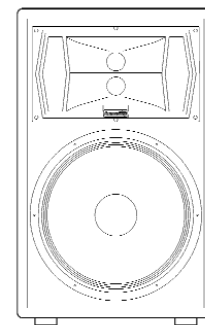
- High Sensitivity
- PowerSense Plus™ Two Stage Solid State Protection Circuitry with Rear Indicators
- Black Carpeted Exterior
- Light Weight
- Easy to Install
- Pole Mount
- Focused Array HF

DESCRIPTION

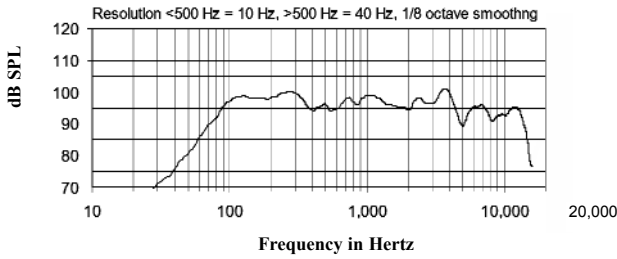
The DnD12 is a compact and efficient two-way sound reinforcement loudspeaker system. The enclosure of the DnD12 is a multi-angle cabinet that can be employed as a stage monitor (at either of two angles) or upright as a front-of-house speaker system. The low frequency driver in the DnD12 is a high power, high efficiency 12" woofer. The high frequency Focused Array section is a unique dual driver pattern control horn. The two HF drivers are angled in the vertical plane to maintain a constant vertical coverage pattern at all frequencies. The pattern control design of the DnD high frequency horn also maintains a constant coverage pattern in the horizontal plane, thus preventing the beaming (extreme narrowing of coverage pattern) often found in systems of this type.

The DnD systems are equipped with a very effective PowerSense Plus™ two-stage protection system. This protection system virtually eliminates driver damage due to over-powering. If excessive power is applied to a DnD system, the first stage of protection will be activated. Output level of the speaker system will be reduced by 3 dB, and a red LED indicator on the input panel will be illuminated. If the power applied to the system remains at this level, the system will continue to operate in the first stage protect mode. If the power is increased beyond this level, the system will activate the second stage of protection, which results in a large reduction in output level and completely protects the drivers from any power applied.

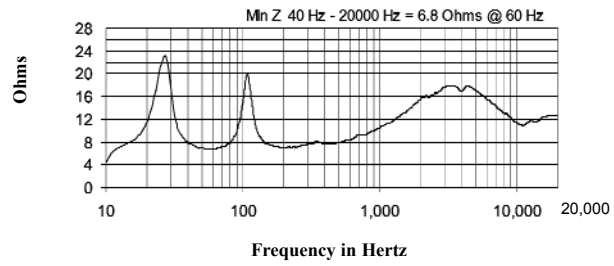
The DnD12 enclosure is covered in rugged black carpet. The perforated steel grille is specially formed to provide both increased stiffness and an attractive appearance. The enclosure is equipped with a stand socket for use with a speaker stand, and is also equipped with three mounting points for fixed installation using Community's accessory mounting strap kit.



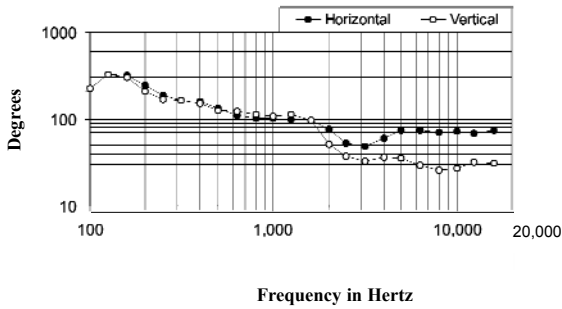
Frequency Response



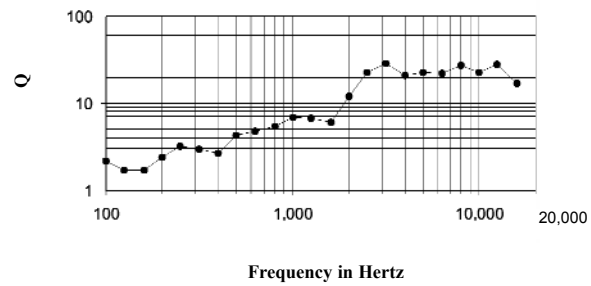
Impedance



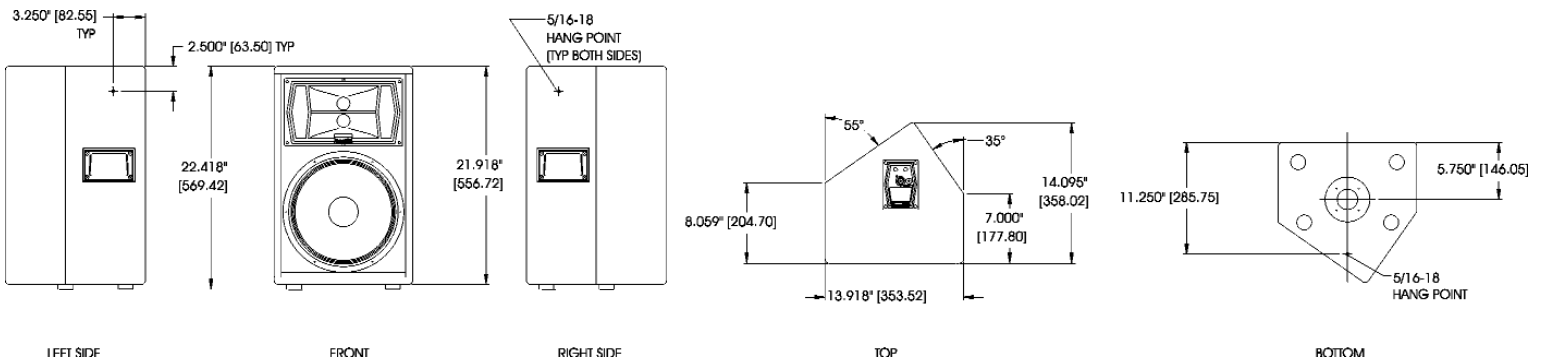
Beamwidth



Axial Q



DIMENSIONS



ARCHITECTS AND ENGINEERS SPECIFICATIONS

The loudspeaker system shall be a two-way, full-range design with one 12" woofer and two 1" exit high frequency drivers in vertical alignment mounted to a 90°H x 40°V molded horn. There shall be two 1/4" input jacks and one locking connector. The enclosure shall be constructed of 18mm particle board, covered in black carpet with an 18 gauge perforated grill. The system shall have an amplitude response of 50Hz - 16kHz, with an input capability of 35V RMS, a 97 dB SPL sensitivity at 1W/1m, and an 8 Ohm nominal impedance. The loudspeaker shall be 22.4 in. (569.4 mm) H x 13.9 in. (353.5 mm) W x 14.1 in. (358 mm) D and weigh 29 lbs/13 (kg).